

Candlelight

A publication of Community Hospice

Fall/Winter 2020

Inside:

- Long-time Executive Retires
- Volunteers Honored
- Spiritual Care & Bereavement

NONPROFIT ORGANIZATION
U.S. POSTAGE PAID
ASHLAND, KY
PERMIT NO. 79

1480 CARTER AVENUE
ASHLAND, KY 41101

Did you know...

...that right now you could be receiving your treatments in the comfort of your own home, hassle free, in some instances with little to no out of pocket cost to you?

THERAPIES



- Anti-Infectives-
Antibiotic, Antiviral,
Antifungal
- Diuretic
- Cardiac Perfusion
- TPN/PPN
- Pain Management
- Chemotherapy
- Hydration
- Chelation
- IVIG (Immune
Globulin)
- Remicade
- Interferon
- Anticoagulant
- Steroid
- Colony Stimulating
Factors
- Others upon Request



infusionsolutions.org

Quality is the prescription we fill everyday.

For Referrals Call or Fax

Toll Free 888-446-6348

Fax 866-606-4663

Providers for over 100 network payers

Serving Kentucky, Ohio & West Virginia

\$17/HOUR, FLAT RATE

for all days, nights, weekends & holidays



SERVICES OFFERED:

- | Transporting to activities and appointments
- | Routine housework and light cleaning
- | Meal preparation
- | Hygiene and toileting
- | Bathing, showering, and bed bath
- | Dressing and undressing
- | Turning, transferring, exercising, and walking
- | Self-administered medication reminders
- | Errands and shopping
- | Caring for pets
- | ABOVE ALL - Keeping loved ones safe and comfortable at home

OUR CAREGIVERS ARE:

- | Drug tested
- | Background checked
- | Trained
- | Experienced

BENEFITS:

- | Consistency in caregivers
- | 24/7 In-Home Care Available
- | No Deposit Required
- | No Contract Required
- | Managers available at all times
- | RN visits available



CALL OUR OFFICE: 606.694.4407

Board of *Directors*

Autumn McFann, President
 Tom Burnette, Vice President
 Jason Suman, Treasurer
 Mary Kay McGinnis-Ruark, Secretary
 Jansen Fennell, Past President

Dr. Stacy Caudill	Nan McGuire
Paul Craft	Bruce VanHorn
Kathy Elam	Luke Vincent
Susan Fried	Molly Webb
Steve Gilmore	Christa Wiley
Theresa Hall	

Susan Hunt, Executive Director
 Dr. Kristie Dickess, Medical Director
 Dr. Ryan Kazee, Assoc. Medical Director
 Dr. Tim Hart, Physician
 Dr. Matt Lewis, Physician

Mission Statement

To serve the community through compassionate hospice and palliative care.

Table of *Contents*

Executive Director's Letter	2
Board Profile	3
Susan Hunt Retires	4
New Ways to Honor our Veterans	5
Volunteer Recognition Event.....	6-7
Spiritual Care & Bereavement.....	8
Walk to End Alzheimer's.....	9
Memorials, Honorariums & Donations.....	10-16

Corrections - Are you receiving duplicate copies of *Candlelight*? Is your name and address correct? We would appreciate it if you would let us know. Contact Community Hospice at 606-329-1890 / 800-926-6184 or via email at: hospice@chospice.org.

Non-Discrimination Notice

Community Hospice complies with applicable Federal civil rights and does not discriminate against any person on the basis of race, color, age, gender, gender identity, gender expression, sexual orientation, religion, national origin, marital status, military status, disability, genetics or ability to pay in admission, treatment or participation in its programs, services, activities or employment. For further information about this policy contact the Executive Director at 606-329-1890.

English

ATTENTION: Language assistance services, free of charge, are available to you. Call 1-606-329-1890 (TTY: Kentucky 1-800-648-6056; Ohio 1-800-750-0750).

Spanish

ATENCIÓN: si habla español, tiene a su disposición servicios gratuitos de asistencia lingüística. Llame al 1-606-329-1890 (TTY: Kentucky 1-800-648-6056; Ohio 1-800-750-0750).

Chinese

注意：如果您使用繁體中文，您可以免費獲得語言援助服務。請致電 1-606-329-1890 (TTY: Kentucky 1-800-648-6056; Ohio 1-800-750-0750)。



From compassionate support
 to peace for the whole family
this is home care.

At FirstLight® Home Care of The Foothills, we focus on providing empathetic care and overall support, not only for your loved one, but for your family and friends as well. Our caregivers work in tandem with nurses, physicians, social workers and occupational and physical therapists to ensure that your loved one remains comfortable, safe and peaceful in the place they call home.

Schedule a complimentary
 consultation today.

606-393-0669

TheFoothills.FirstLightHomeCare.com



STEEN FUNERAL HOMES

*“Providing compassionate,
 affordable service since 1925”*



(606) 324-4128

From the Director...



From the Director...

It is with heartfelt sadness that I write this, my last article for the Candlelight. As many of you know, I am retiring from my position at Community Hospice effective January 31, 2021. It has truly been an honor and privilege to serve as the

Executive Director of this organization for the past 31 years. I can think of no worthier mission than to bring comfort and dignity to the dying, and support and encouragement to those who are grieving. I am truly grateful for the opportunity to have served as a leader here at Community Hospice and I'm proud to have been a part of an organization that serves the community in the capacity of our hospice program. While I am looking forward to my retirement and spending more time with my family and friends, starting this next chapter is bittersweet. Hospice has been such a big part of my life and leaving the organization will no doubt create a void. I have had the privilege of working with some of the most compassionate and caring people over the years and it is those relationships and interactions that I will miss the most. I have truly enjoyed my career and will always reflect happily on the time I spent at Community Hospice, including the many friendships that were forged.

I leave the organization in excellent hands. The new Executive Director, Rod Hieneman, will do an outstanding job leading Community Hospice into the future. He will have the support of an incredible team of health care professionals who are unwavering in their commitment to provide the best possible care to our patients and their families. Community Hospice is very fortunate to have many experienced staffers (many of whom have been with the organization for more than 20 years) who know what good quality hospice care entails. I have

no doubt that Community Hospice will continue its 41-year old mission of providing quality hospice and palliative care to our community.

I would be remiss if I did not thank all of our volunteers and supporters who have helped and supported the organization over the years. I have been so fortunate to serve alongside board members who provided excellent guidance to our organization and I especially thank them for the confidence they have shown in me over the years. I have also had the pleasure of working with hundreds of hospice volunteers. These special individuals are truly some of the most kind and generous people in our community. Our volunteers are the heart of Community Hospice and I have a tremendous amount of respect for them. I have been privileged to work with many other health care and business professionals in our community and am grateful for their assistance and friendship throughout the years. In the course of 31 years, I have also crossed paths with many local and state officials and really appreciate the respect they have shown me and our hospice program. When I leave in January, I will take with me many strong bonds of friendship and will cherish all of the wonderful memories that my time here at Community Hospice has afforded me. Here is wishing the organization and all my colleagues a warm goodbye and the very best for the future.

Kindest regards,

A handwritten signature in black ink that reads "Susan".

Susan Hunt

(cover photo) Luminaries at the Community Hospice Care Center (2330 Pollard Road, Ashland) will be on display each evening throughout December

Community Hospice Welcomes New Executive Director



As Community Hospice prepares for the retirement of its long-time Executive Director (see related articles on pages 2 & 4), the Board of Directors has over the last several months been evaluating and interviewing candidates to fill the position.

Rod Hieneman began his duties on November 30 as the new Executive Director. Mr.

Hieneman will spend the next two months with outgoing Director Susan Hunt.

Mr. Hieneman has a long career in health care having most recently served as the Chief Operating Officer at Our Lady of Bellefonte Hospital. During his 25 years at OLBH, he led many clinical and support service programs overseeing more than 400 employees. His duties included: strategic planning and growth oversight, budgeting and cost management, quality management and patient satisfaction, facilities oversight, and capital budgeting and new program implementation.

Mr. Hieneman received his Bachelor of Health Science, Health Administration degree from the University of Kentucky, with a Masters of Hospital and Health Administration degree from Xavier University. He has been involved with numerous professional organizations including the American College of Healthcare Executives, Kentucky Hospital Association, and the Bon Secours Legacy and Leadership Program. Locally, he is currently a Board Member for Member's Choice Credit Union and has been a member of various civic organizations over the years.

Mr. Hieneman is a Greenup County native. He and his wife, Linette, have two daughters, Sara and Sydney. They are members at First Baptist Church, Russell. Mr. Hieneman is the son of the late Don Hieneman and Rebecca "Bonnie" Hieneman of Greenup. In his spare time, Rod enjoys fitness, home improvement projects, and providing free fastpitch softball lessons to local youth.

Please join us in welcoming Rod Hieneman to Community Hospice! We look forward to his expert leadership and continuing our legacy of excellence.

BOARDPROFILE



Jason Suman

A member of the Community Hospice Board of Directors for three years, Jason Suman brings a wealth of business and financial expertise to our organization. Mr. Suman currently serves as Board Treasurer and is also the Finance Committee Chair.

Mr. Suman, with over 23 years of banking experience, is the Market President and Head of Business Banking for Citizens Bank of Kentucky. He attended Northern Kentucky University, and has attended several American Banker Association (ABA) and Kentucky Banker Association (KBA) banking schools, including the ABA Graduate Commercial Lending School at Cox School of Business in Dallas, Texas at SMU. Suman also graduated from the prestigious Stonier Graduate School of Banking at Wharton in Philadelphia and holds

an Executive Leadership Certification from Wharton Business School.

Suman continues a long tradition of community service within the banking industry. He was instrumental in the formation of the Ashland Alliance's Young Professionals, and also helped create the Russell Education Endowment Foundation. In addition to serving as a Site Based Council Member for Russell High School, he has also served as a board member for both little league and junior league football. He is a past board member for Hope's Place, the Ashland Lions Club and former President of the Bellefonte Country Club.

Mr. Suman and his high school sweetheart, Tina, live in Wurtland. They have two boys, Logan and Zach. In his spare time, Jason enjoys boating, fishing and outdoor cooking.

Jason Suman's experience and leadership is a valuable asset to the Community Hospice Board of Directors. We appreciate his expertise and commitment to the Community Hospice mission. Thank you!

Long Time Executive Director Susan Hunt Set to Retire

by Beth Taylor, Marketing and Community Outreach

A lot can change in three decades! Susan Hunt has been the Executive Director of Community Hospice for 31 years and has guided our organization through many changes, along with significant growth. When she joined Community Hospice in the Fall of 1989, we had 11 employees and less than 20 patients. Today, we employ 130, are caring for 175 patients per day and over 1,400 patients per year.

Founding Board member and current volunteer, Martha Gesling recalled interviewing Mrs. Hunt for the Executive Director's position. "You could tell then that she had the management insight to take our organization to the next level. I was impressed then, and still am today," said Gesling, a retired bank manager.

Although Community Hospice had already merged with the Ironton/Lawrence County Hospice by the time Mrs. Hunt arrived, the expanded services for that region have continued to flourish under her direction. In 2008, we expanded again to include Martin and Johnson counties in Kentucky. Through her leadership, Community Hospice has grown to serve nine-counties in eastern Kentucky and southern Ohio.

In 1993, Susan approached Charlene Ferrell, then Executive Director at Hospice of Huntington, about sponsoring a grief camp for children. Through their joint efforts, Camp Nabe was launched the following year. Although it has changed formats over the years, Camp Nabe is still an important program that has helped a lot of young children understand and cope with their grief. After 26 years, Camp Nabe continues today.

Not only has Community Hospice benefitted from Susan Hunt's leadership and vision, hospice programs throughout the state have gained as well. Susan has served two separate terms as President of the Kentucky Association of Hospice and Palliative Care (KAHPC) and chaired KAHPC's legislative and regulatory committee for many years. She has also served the National Hospice and Palliative Care Organization's (NHPCO) Council of States.

Brandy Cantor, Executive Director of KAHPC said, "Susan Hunt has never shied away from a challenge. She is a strong voice for hospice care, both regionally and nationally. She has a calm demeanor, is a staunch advocate, is honest and thoughtful in her approach. She has been a go-to person for me that I could always depend upon. Susan's contributions are countless. She will be greatly missed!"

In 1999, Susan Hunt began talking to the Community Hospice Board of Directors about the need for a hospice inpatient unit. Watching the trends across the nation and the growth of our program, Susan felt our community would greatly benefit from the increased services we could offer to our patients and their families. After diligent work over several years, Mrs. Hunt along with KAPHPC and the support of our local legislative delegation, the state finally passed the necessary laws and regulations for such a facility. Thus, the Community Hospice Care Center was the first hospice inpatient facility licensed in Kentucky.

Her work for the Care Center did not stop there. Next, Mrs. Hunt led the Board in an extensive Capital Campaign to raise community support for the construction of the Care Center. With their help, she guided the entire process and the ten-bed Community Hospice Care Center opened to the public in February 2005. After continued growth, it was expanded to fifteen beds in 2008.

Steve Simmerman, a three-term board member and former president, echoed many of the same sentiments of others. He especially noted Mrs. Hunt's ability to attract good board members that brought needed expertise to the organization whether it was those with legal, financial or health care backgrounds. "Having an excellent board and strong community support has contributed to her successes and those of the organization," said Simmerman.

The regulatory changes needed to allow hospices the use of automated medication dispensaries at their inpatient units was another legislative success of Mrs. Hunt, recalled KAHPC's Brandy Cantor. Again, there were many state agencies and governing bodies that needed to agree upon this rule change. Cantor said, "It was with the unwavering determination of Susan Hunt that this change was finally approved in 2006."

Current Board Member Tom Burnette, who has also previously served on the Board, recalled Susan's leadership and strong business management skills over the years at Community Hospice. Mr. Burnette said, "Today, Community Hospice has become a regional leader in hospice care and is one of the area's strongest, most respected non-profit organizations both financially and in regulatory compliance. Susan has been great in working with the Board and is also respected by the employees. She will be hard to replace."

The legacy Susan Hunt has built at Community Hospice will live on for years to come. Former Board Member and employee, Rosemarie Kavanaugh said, "Susan could see the big picture. She kept the organization moving forward. She always had hospice at the forefront of her thinking. No matter where she was or what she was doing, Susan always had our best interests at heart. We have all benefitted from her vision."

It is the patients and families Community Hospice has served, and those we will care for in the future, that truly benefit from all Susan Hunt has given to this organization. May your retirement bring you as much joy as your vision has brought to us.

New Ways to Honor our Veterans



WE HONOR VETERANS



At Community Hospice, taking care of our military Veterans is a big deal. The most visible recognition of this is our partnership in the We Honor Veterans (WHV) program, having achieved the highest Level 5 status earlier this year. Only 140 hospice programs nationwide have accomplished such prominence.

One of the requirements for WHV5 is an ongoing commitment to train staff and volunteers, and to also honor Veterans in the community. Finding ways to accomplish those goals this year amid the pandemic, has been a challenge.

For ten years, we have held an annual Veterans Day Service at the Community Hospice Care Center and invited our Veteran patients and families we have served during the year. This event has featured Community Hospice Veteran volunteers, state officials, decorated heroes, and friends from the Veterans Administration. We have been able to utilize local high school JROTC programs, the National Guard and our Marine Corp League. Unable to safely gather for a service this year, we mailed greeting cards to our patient families as a remembrance for their loved ones who so honorably served our country.

Another popular program within WHV5 is the Vet-to-Vet Cafés we have previously hosted at several area assisted living and long-term care facilities. One of our Veteran volunteers facilitates a conversation, over coffee and cookies, with their residents who are also Veterans. Veterans are often hesitant to talk about their military service with their friends or family members, but seem more comfortable talking about their service with other Veterans who likely had similar experiences. Although we look forward to hosting Vet-to-Vet Cafés again soon, this year we were able to let those Veterans know we still care by providing them goodie bags on Veterans Day.

We have continued to honor all our Veteran patients with a branch specific military certificate and a lapel pin as a thank you and token of our appreciation. Vietnam Era Veterans receive an additional certificate and a special set of beads that can only be made by a fellow Vietnam Veteran. Military Veterans at our Care Center also receive recognition with a flag-draped door and a patriotic quilt made by one of our hospice quilters.

As you can see, Community Hospice has a strong commitment to honoring our Veterans who have given so much in defense of our freedom. Thank You!!!



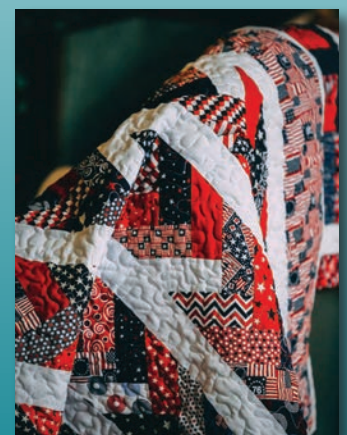
Col. (RET) Mike Graese



Veteran Goodie Bags



Veteran Goodie Bags



Veterans Quilt

Volunteer Appreciation from a Distance

by Andrea Arnett, Director of Volunteers

How do we show those we love how much we appreciate them and what a difference they make in our daily lives when we cannot see them? That was the million-dollar question to be answered this year by our volunteer department, and likely a question many of you have been asking yourselves throughout this pandemic.



Betsy Cole & Ashley Hall



Betsy Cole & Jimm Smedley

Under normal circumstances, Community Hospice would host an annual Volunteer Appreciation Luncheon at Bellefonte Country Club during National Volunteer Appreciation Week in April and we would also host a Volunteer Holiday Party in early December. In an effort to keep our vulnerable volunteer population safe, both of these events were cancelled and a creative, new drive-thru appreciation event was planned instead.

Community Hospice volunteers were invited to drive-thru the main office parking lot on Friday, November 6th and were greeted by 50's themed decorations, Elvis music and staff dressed in costume. Gift bags were given to each volunteer as they drove through the event, stopping at stations along the way to receive volunteer branded gifts and cheers from Community Hospice staff holding signs of appreciation. Once turning the corner in to our parking lot, volunteers were surprised by Elvis himself, serenading them and thanking them for their never-ending hours of service to our organization.

The hospice movement was originally started by volunteers and that tradition carries through to today where volunteers continue to be the heart of hospice, there to sit, listen and bring comfort when words simply can't suffice.

Community Hospice looks forward to the opportunity to continue to engage and appreciate our volunteers in safe ways as we continue to move through the pandemic. If you or someone you know may be interested in volunteering with Community Hospice, please contact our Director of Volunteer Services, Andrea Arnett at 606-329-1890 or aarnett@chospice.org.



"Elvis" & Andrea Arnett



Carla Shope & Andrea Arnett



Participating employees (2 photos) include: Rachel Swindler, Leigh Ann Hamilton, Lori Ison, Heather Sellars, Traci Adkins, Jimm Smedley, Ashley Hall, Volunteer Kathy Elam, Krissa Leadingham, Mandy Medinger, Carla Shope Betsy Cole, Susan Hunt, Andrea Arnett, Kathy Cunningham.

Volunteer Service Awards

30 year volunteer

Darlene Hennecke

20 year volunteer

Karen Radjunas

15 year volunteer

Carl Stephens

15 year quilter

Lois Murray

Marjorie Woodrum

10 year volunteer

Linda Dickison

Nichole Hicks

Erma Arbaugh

10 year quilter

Chris Bush

Joyce Osborne

5 year volunteer

Virginia Weed

John Cannon

Tom McCormick

Terry Wells

Harry Thacker

5 year quilter

Nancy Adkins

Dellerene Fannin

Pam Gillium



Traci Adkins with Susie Brown



Sondra Gibbs & Jean Steen



Chelon Moatz



Jenny Cross

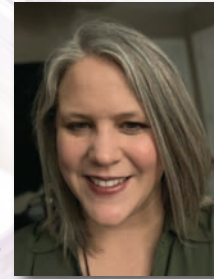


Tom McCormick

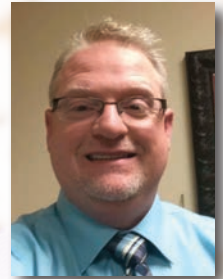
Spiritual Care and Bereavement

Several months ago, knowing people are experiencing a range of emotions as we continue to live during a pandemic, several Community Hospice employees engaged in a conversation about how we might help people cope during this unprecedented time. After all, we help people everyday to cope during one of life's most difficult times. the illness and death of a loved one.

As a result, Community Hospice Chaplains Jimm Smedley and Betsy Cole began recording brief devotionals to help guide us through our every day lives. These videos are typically about two minutes and are usually posted to the Community Hospice Facebook page once a week.



Betsy Cole



Jimm Smedley

Along those same lines, our Bereavement staff also realized we would not be able to host our traditional Memorial Service. They began brain-storming ideas on how we might honor the patients we have cared for during the year and provide comforting support to their families.

On December 1, 2020, Community Hospice hosted a virtual Memorial Service with the online video being posted to our website – www.chospice.org. The service will be available on the website throughout December. Additional details about the service and a memorial gift for those patients who we cared for from May 2019 through October 2020 have been mailed to our patients' families.

If you do not currently follow us on Facebook, we encourage you to "like" and "share" these devotional messages with others. You'll find us at Community Hospice, Inc. Ashland, Ironton with the stained-glass window as our profile picture. We think you'll find the weekly devotionals very uplifting and hope the Memorial Service will bring peace and comfort to our grieving families during this Holiday season.



Holiday Memorial Service at the Care Center, December 2019.

Walk to End Alzheimer's

Just like everything else this year, the Alzheimer's Association was unable to hold their traditional Walk to End Alzheimer's event. Because Community Hospice sees the effects of this disease everyday with patients and their families, we felt it was still important to support this cause.

Throughout the month of September, our Team Leader Traci Adkins, organized a series of drive-thru lunch events and a virtual auction to increase our fundraising efforts. On Saturday, September 26, Traci encouraged us to meet at Central Park for the traditional lap around the park.



Photo caption: Employees and their families who participated in the Walk to End Alzheimer's included Rosie Blevins, Traci Adkins, Betsy Cole, Susan Hunt, Andrea Arnett, Lori Ison, Heather Sellars, Beth Taylor and Elissa Collier (not pictured).

In total, Community Hospice and our employees contributed nearly \$3,000 to support the Alzheimer's Association and their research work to end Alzheimer's disease.

Community Hospice Memory Brick Walkway

\$100 Contribution - Brick Inscription - 2 lines - Maximum 18 characters per line including spaces

The Memory Brick Walkway in the Sam Mansbach Memorial Gardens at the Care Center is an excellent way for you to recognize a friend, family member, neighbor or colleague while supporting the programs and services of Community Hospice.

Bricks may be purchased in memory of or in honor of anyone who is special to you and your family, not just those who have been served by hospice. This is an excellent way for you to recognize someone on their birthday, anniversary, Christmas or other special occasion. Your \$100 contribution will be used to support the Care Center.

(Check one) In Honor of In Memory of

Your Name _____

Address _____

City, State, Zip _____

Phone Number _____

Send Acknowledgement of Memorial Brick to (optional):

Name _____

Address _____

City, State, Zip _____

Return this form along with your \$100 contribution to:
 Community Hospice • 1480 Carter Avenue • Ashland, KY 41101

Memorials, Honorariums & Donations

Memorials

May 1, 2020 – October 31, 2020

Mrs. Betty M. Adams

Bill and Carolyn Stapleton

Mrs. Betty Stapleton Adams

Steve and Nancy Martin

Mr. John Mark Adams, Jr.

Mrs. Martha Archer Damron
Susan Hunt
Mr. Howard Rose

Mrs. Doris Armstrong

Rob and Robin Armstrong

Mrs. Jewell Balsiger

Mr. and Mrs. Charles Horan
Ms. Judy Justice Ledford

Mr. Wendell Banks

Mrs. Mary F. Banks

Mrs. Lillian Ruth Barker

Mr. Carl Barker
Mr. Paul Bostick
Mr. William Brickles
Great Lakes Minerals, LLC
Greenup County Quilters Guild
Ms. Carol Gunderson
Everett and June Hall
Ms. Nancy Sammons
Mrs. Janice Tackett
Wurtland High School Class of 1960

Mr. Philip Barnes

Chaplain Jimm Smedley

Mrs. Katy Bartram

Bob and Beth Anderson
Ron and Lori Baker
Tracy and Linda Brammer
Michael and Terry Citti
David and Sue Deeds

Ironton Elementary K-5 PTC

Ms. Jennifer Mays
Ms. Mary Beth Nenni
Mrs. Mary Vanderhoof

Mr. Marvin Black

Noel, Lowell and Scott
DePriest

Mr. Willis L. "Les" Blevins, Jr.

Mrs. Jodi Senters Graham
Chaplain Jimm Smedley

Mr. James "Jim" Boggs

Mr. Stan Pinson

Mr. Earl V. Bradley

David and Doris Bradley

Mrs. Ruth Bradley

Chaplain Jimm Smedley

Mrs. Bobbie Sue Hillman Brooks

Mr. Bill Hillman

Mr. Harold Brown

Randy and Debbie Biggs
Jack and Kay Brown
Chaplain Jimm Smedley
Ms. Lana M. Smith

Mr. Shannon Lee Bruce

Ron and Kati Davidson

Mr. Thomas J. Bryan

Mrs. Marie Fannin
Ms. Mabel Roberts

Mr. Donnie Bryant

Chaplain Jimm Smedley

Mrs. Darlene Burchett

Ms. Suzanne M. Jambe
The Gang at Mansbach Metal

Mr. Steve Burchett

Mrs. Christine McGlone

Mr. John Burke

Mr. John R. Greer
Mr. Stan Pinson

Mr. Steve Burkhardt

Rolland and Sheryl Robieson
Jim and Linda Spear

Mrs. Ruth Burns

Bill and Garnet Stapleton

Mrs. Doris Bush

Mr. Ronald J. Bush

Mr. Paul Butler

Mr. Stan Pinson

Mrs. Emma Jean Campbell

Marc and Lynne Craft

Mrs. Willa Marlene Cantrell

Mr. and Mrs. Curtis Cassell

Mrs. Hazel Castle

Ms. Carol Castle

Mr. Willard Castle

Ms. Carol Castle

Mr. Karl Douglas Chapman

Jack and Sandy Floyd

Mr. Joe Charles

John and Vickie Cromwell
Stephen and Mary Cromwell
Gaylord and Nadine Crum
Robert and Marjorie Holbrook
Steve and Lori Ison
Mrs. Betty Lou Moore
Mrs. Annette Murphy
Ms. Stephanie Neill
Mr. Stan Pinson
Mr. Thomas Poarch
Mr. and Mrs. Tom Sennett
Chaplain Jimm Smedley
Bill and Garnet Stapleton

Pamela Hood and Chip
Womack

Mrs. Teresa Chatfield

Mr. Doug Chatfield
Phil and Rhonda Chatfield
Chad and Amy Tackett

Mr. Henry "Hank" William Clark

Mr. and Mrs. Jeffrey Elswick

Mrs. Diana L. Clarke

James and Linda Clarke
Tony and Nancy Clarke
Debbie Adkins, Patti Grissom,
Diana Bowman and Families
Jim, Brenda, Vince and Libby
Dunfee
Mayo and Glenda Martin
Chris and Kristy Slone
Chaplain Jimm Smedley

Mrs. Judith Ann Fultz Clayton

Ms. Billie Leslie Dunlap
James and Deborah Dunlap
Shafer

Mr. Walter S. Clayton, Jr.

Ms. Billie Leslie Dunlap
Ms. Rebecca Humphrey
Ironworkers Local Union #769
Ms. Pat Preston
Michael and Charlene Qualls
Rick and Susan Schneider
James and Deborah Dunlap
Shafer

Mrs. Ann Coleman

Tim and Pat Elam
Ms. Lois Jackson

Mr. Dan Coleman

Ms. Lois Jackson

Mr. Roger Cooper

Mr. Stan Pinson

Mrs. June Cornett

Robert and Barbara Hart
Hunter and Kim Hoffman
Jack Hoffman and Nan Daniels
Ms. Sharon Slusher

Mr. Gary Cottle

Michael and Dinah Sturgill
Walt and Syma Zerkow

Mr. Paul Cremeans

Ms. Rosa M. Fraley

Mrs. Ruth Cremeans

Ms. Rosa M. Fraley

Mrs. Virgie Helton

Meeks Damron

Dean and Linda Bartlett
Ms. Brenda Carr
Mrs. Bonnie Helton Crabtree

Buford and Judy Dowell

Mr. Charles L. Grizzle
Larry and Marsha Helton
Ms. Rita Talbert
Pat and Tim Thompson
Heather and Cory Williams

Mr. Steven Davidson

Mrs. Martha Osborne

**Mrs. Mary Elizabeth
Reed Dawson**

Jim and Tami Bolte
Ms. Linda Bolte
Bridges Christian Church
Bridges Christian Church, CU
Sunday School Class
Bob and Julie Coburn
Miike and Sharon Reed
The Ramey Reed Family

Mr. Jack DeAutremont

Mrs. Lois DeAutremont

Mr. John L. Deter

Ms. Stephanie Deter

Mr. Harold Dixon

Ms. Jamie Green
Chaplain Jimm Smedley

Mrs. Bernice Dobson

First Church of the Nazarene
Chick and Judi Henthorne
Mrs. Billee Schlaudt

Mr. Kenley Dobyms

Mrs. Janet Dobyms

Mrs. Ann Douglas

Ms. Phyllis Akers
Lawrence County, Ohio
Retired Teachers Assoc.
Larry and Carol Pennington

Mr. Lloyd Duncan

Angie and Tanner Duncan
Chaplain Jimm Smedley

Mrs. Geneva Dysard

Ms. Hallie Miller

Mrs. Hazel Mae Fields

Robert and Barbara Hart

Mr. Charles E. Forrest

Harold and Kanda McKee

Mrs. Betty Fosson

Scott and Anna Fosson
The Hitchcock Family
Amy Stewart, Lexie, Laney
and C.K.
Treasure Seekers Bible Class

**Mrs. Mary Rebecca
Franklin**

Gary and Susan Dearborn

Mr. Bill Franz

Mrs. Pam Womack

Mr. Glennard French

Ms. Jane Callihan



Good
NEIGHBORS
Make Great **LENDERS**

TODAY. TOMORROW. *Together*



Andrew Greene
#414631

Justin May
#414634

Mike Bowling
#414627

Journey Jordan
#1593026

Dave Anderson
#486506

- ✔ Local Decisions
- ✔ Loans Never Sold
- ✔ Fixed Rates
- ✔ Low Closing Costs
- ✔ No PMI

Whether you're looking to buy your first home or your forever home,
find the loan options and support you need from a team right here in your community.
At KFB, we keep it simple, making it a positive and exciting experience.



606.929.5000
WWW.kfb.bank

Ms. Teresa Carson
Michael and Debra Curry
Mr. Edward Dobbins
Ms. Janis French
Mrs. Carolyn French Hall
Mrs. Martha Osborne
Russell High School Class of
1972
Jim and Patty Stanley
Tri-State Georgie Boys,
Chapter 1

Mrs. Juanita Gibson
Ms. Ernestine Hicks

Mrs. Marilyn Goddard
Ms. Jacque Brownstead
Ms. Deborah Lewis
Ms. Clara Marcum
Mrs. Martha McGuire
Mr. and Mrs. Edward
Radjunas
Mrs. Jo Weller

Mrs. June Gordon
Ron and Connie Ruark
Lemaster

**Mr. Robert Lester
Greene**
Mrs. Lena Greene

Mr. Royce Greene
Mrs. Lena Greene

**Mr. Daniel R. "Danny"
Griggs**
American Electric Power
Ms. Kimberly Burton
Jim and Fanny Crouch
The Dettinger Family
IBEW Local Union #102
Mr. Christian Cremeans
Spurlock
Bill and Garnet Stapleton
The Burton Siblings

Mr. Oral R. Groves
Russell High School Class of
1972

Mrs. Ann Haight
Mr. and Mrs. Roy Haight

Mr. David Hall
Carter Christian Holiness
Church
Bobby and Carol James
Ms. Jean James

Mr. Jerry T. Hall
Ms. Charla B. Baker
Chaplain Jimm Smedley

Mrs. Joyce Hamilton
Ms. Angie Maynard

Mrs. Phyllis Hamilton
Bob and Julie Coburn

Mr. Estill Phillip Haney
The Jerry and Beverly Clark
Family
Mr. Stan Pinson

Mr. Gary David Hardy
Mr. John Hurley

Ms. Jamie Nicole Hardy
Mr. John Hurley

**Mr. Mervel D. "Todd"
Hardy**
Ms. Linda Hardy

Mrs. Emma J. Harper
Mr. Kenneth Brown
Mrs. Janet Dobyms
Mr. John R. Greer
Roger and Glorious Hensley
Jim and Susan Hunt
Lunch Bunch - Linda, Leslie,
Helen, and Donna
Mr. Stan Pinson
Ms. Marianna Plummer
Ronnie and Patricia
Robinette
The Canasta Group

Mr. Larry Hearne
Mrs. Sharon Hearne

Mrs. Ruth Hedrick
Mr. John R. Greer
Tom, Brenda, Todd, Angie and
Tracey Kelley

Mr. Jay Hensley
Wayne and Joy Adkins and
Family
Larry and Gloria Taylor

Mrs. Frankie Hitchcock
Gary and Terri Belcher
Fred and Dana Hill
The Hitchcock Family
Steve Massie and Family
Fred, Vicky, Michelle and
Mindy Waldren

Mr. Larry D. Hogg
Donald and Carolyn Trimble

J.W. and Clella Holcomb
Larry and Elveda Womack

Mrs. Patricia Holtzapfel
Ms. Joy Corn
Rod and Becky Depriest
Kevin and Amy Glockner
Chick and Judi Henthorne
Mr. Lawrence Holtzapfel
Ironton High School Class of
1958
Mr. and Mrs. Charles Leach
Mrs. Iris N. Malone and Suzy
Mr. Charles E. Philabaun
Pat and Jane Whaley
Whites Custom Meats

Mrs. Edith Horsley
Chaplain Jimm Smedley

Mrs. Doris Horton
Chaplain Jimm Smedley

Mr. Ronald Houston
Whites Custom Meats

Mrs. Eva Hughes
Ms. Linda Majher

**Mrs. Mary Magdalene
"Maggie" Hughes**
First Baptist Church of
Worthington

Mrs. Ethel Hurley
Mr. John Hurley

Mrs. Armana Irvine
Randy and Deloras Spradlin

Mrs. Ruth Runyon Jarvis
Gwen, Brian, Shelley and
Katie McCallion

**Mrs. Linda Collinsworth
Jenkins**
Ms. Garnet A. Gordon

**Mrs. Mary L. Leibee
Johnson**
Ms. Helen Kozee
Ms. Kitty Leggett
Ms. Vivian Malloy

Mr. Allan Lee Jones
Mrs. Shauna Jones and Family

**Mrs. Dolores Jean
Davidson Jones**
Mr. Andrew Jones

**Mr. Orville (Bucky)
Cline Jones, Jr.**
Mr. and Mrs. David L. Smith

Mrs. Ann Justice
Woody and Teresa Fosson
Mrs. Sharon McDonald
Gary and Susan Parsons
Mrs. Bertha Warnock
Mrs. Pauline Wheeler

Mr. Doyle Justice
Mr. Stan Pinson
Bill and Garnet Stapleton

Mrs. Dorothy Kaulius
Mr. and Mrs. James F. Gardner
Larry and Elveda Womack
Mr. Mike Womack

Mr. Robert Kaulius
Mr. and Mrs. James F. Gardner
Larry and Elveda Womack
Mr. Mike Womack

Mr. Roger Lee Keaton
Chaplain Jimm Smedley

**Mrs. Margaret
Jacqueline “Jackie”
Kersey**

Mr. Stan Pinson

Mr. Ova Kimbleton

Huntington Kennel Club, Inc.

Mr. Scott Kirk

Carl Ray and Darlene
Hennecke

Mr. Carl Kittle

Mr. and Mrs. Ronald Arthur
Mr. David Osborne
Ms. Andrea Sue Sparks
Joe and Emmy Wolfe

Mrs. Camille Leist

Mrs. Elfi Sologic

Mrs. Glenna Lett

Mrs. Evelyn Crawford
Mr. John H. Delaney, Jr.
Friends of Hospice
Mrs. Barbara Hall

Mrs. Cathy Wilson

Mrs. Karin C. Lewis

Mu Master Chapter Beta
Sigma Phi

Mr. George Littlejohn

Chaplain Jimm Smedley

Mr. Billy Ray Mabry

Mrs. Darlene Mabry

**Mrs. Sarah James
Marcum**

Kenneth Marcum and Sheila
Sarten

Mr. Bradley Markins

Ms. Cindy Clay
Mr. Shawn Murnahan

Mr. David Markins

David and Doris Bradley

**Mrs. Katherine L.
“Kathy” Martin**

Mrs. Iris N. Malone and Suzy

Mrs. Phyllis Mays

Robert, Tracey and Jesse
Burnett
Ms. Judith Fleming

**Mr. Steven Andrew
Mays**

Flatwoods Freewill Baptist
Church
Mr. John Hurley

Mrs. Phyllis McBrayer

Ms. Nancy Sammons

Mr. Terry Dean McCarty

Mrs. Loyola Baker
Ms. Joye King
Garry and Paula Sennett
Donald and Carolyn Trimble

**Mr. James Elmer “J.E.”
McCormick**

Mr. James K. McCormick

Mr. Charles W. McKee

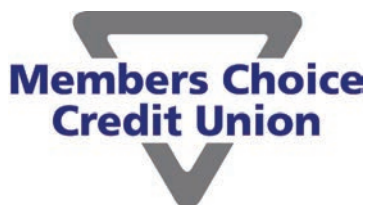
Harold and Kanda McKee

**Mr. James Trace
(Catfish) McKee**

Mrs. Hedy Arrell
Mike and Sheri Arrington
Kris Aylor and The Aylor
Family
Michael and Andrea Bales
Bellefonte Country Club
Ms. Elle Berry
Ms. Jacque Brownstead
Mr. and Mrs. Arthur Bryant
Mrs. Betty C. Cooper
Mr. John H. Delaney, Jr.
Mr. Edward Dobbins
James and Susan Farmer
Mr. Dan Gipson
Brad and Jane Goodman
Mrs. Virginia Hagans
Mr. and Mrs. John R. Hall
Robert and Barbara Hart
Michael and Paula Hobbs
Jo Ann Hoffman, Ron and Teri
Bob and Jo Keifer

Carry the card that weighs less!

If you are not using our Members Choice Visa® card, there is a good chance you are paying a heavy rate and fees at another lender. Cards charging high rates and fees weigh you down.



(606) 329-7876
www.mccu.net



Platinum Visa®
6.99% APR*

Classic Visa®
9.99% APR*

Apply online today at mccu.net

*Annual Percentage Rate. Effective November 1, 2020, and subject to change. Must meet credit requirements. Restrictions apply. See Members Choice Credit Union for full disclosure.

Federally Insured By NCUA



Barry and Mary Livingston
Bob and Marva Loebe
Charles and Carolyn Lovorn
Mr. and Mrs. Charles Luellen
Ms. Clara Marcum
Mrs. Martha McGuire
John and Diana Mollineaux
Mr. and Mrs. John Pettus
Mrs. Nancy K. Quade
Mr. and Mrs. Edward
Radjunas
Ms. Mildred V. Enyart
Scarborough
Ernie and Georgia Stamper
Mr. Stephen W. Towler
Helen and John Wallace
and Craig
Patricia Williams, Val, Tom
and Jim
Mr. and Mrs. John W.
Woods III

Mr. Fred Meade

First Baptist Church of
Cannonsburg
Mr. John R. Greer
Mr. Stan Pinson
Burley and Marilyn Stevens
Chip and Pam Womack

Mrs. Lenora Meredith

Darryl, Jane and Heather
Akers
Mr. John R. Greer
Ms. Norma Kay Justice
Chaplain Jimm Smedley

Mr. Graydon Miller

David & Diane Miller &
Family

**Mr. Chauncey
Montgomery**

The Family of Chauncey
Montgomery

Mrs. Sue Moon

Mr. Stan Pinson

Mr. Dave Moore

Randy and Debbie Biggs

**Mrs. Alice "Rose"
Morgan**

Tim and Ginger Alford
Ms. Rita Deeds
Ms. Libby Fugitt
Ms. Sherry Hamilton
Dennis and Vickie James
Ms. Melinda R. Morgan
Ms. Susan Spears
Paul and Kim Sullivan
Teresa, Betty, Meg, Sam and
Ryan
Mr. Lawrence E. Wells

Mrs. Dorothy Morrison

Dreatha and Michael
Armbrester
Elmer and Barbara
Armbrester
Joseph and Cathy Cline
Ms. Sherry L. Cook
Ms. Linda Gates
Ms. Peggy Maynard
Ms. Lois Plumley
Mrs. Opal Roberts

Mr. Jack E. Musser

Ms. Joan S. Musser

Mrs. Nelline Napier

Ms. Rose Elkins

Mrs. Joyce Nash

Mr. and Mrs. Skip Saunders

Dr. Judy Nichols

Mr. John R. Greer

**Mr. John Paul
Pennington**

Brush Creek Free Will Baptist
Church
Carl Ray and Darlene
Hennecke
Mrs. Carolyn Pennington
Ron and Sheila Riffe

Mrs. Mary Lou Perry

Allyson Adams and Family
Darryl, Jane and Heather
Akers
Ms. Carol Allen
Kenneth and Peggy Baldrige

Ms. Donna S. Barker
David and Cheryl Bennett
John and Gina Bush
Phil and Rhonda Chatfield
Steve and Jolinda Conley
Howard and Patricia Crews
Ms. Gretta B. Duncan
Mrs. Laura Ann Evans
Billy and Linda Frazier
Mr. and Mrs. John Gray
Mrs. Lena Greene
Ms. Vicki Greene
Mrs. Barbara Hall
Shawn and Susan Worley Hill
Ms. Judy Justice Ledford
Ms. Susan Lee
Kevin and Libby Lett
Mr. and Mrs. John
McClanahan
Mr. James Moore
Ms. Lorraine Newman and
Family
Mrs. Alma G. "Duchie" Perry
The Family of John E. Perry
Mike and Susan Robinson
Ms. Janet Rose
Chuck and Melba Runyon
Mrs. Donna Welch
Larry and Cathy Wilson

Mrs. Beatrice Pinkerton

Bill and Garnet Stapleton

Mrs. Peggy Pinson

Mr. Todd Pinson

Mr. Ronald Pinson

Mr. Todd Pinson

Mr. John Plocharczyk

Ms. Patricia Ryiz

Mr. Jim Powers

Ms. Judy E. Carter
Mrs. Wanda Carter
Mr. Robert G. Cruickshank
Mr. John R. Greer
Ms. Judith A. McCoy
Mr. Stan Pinson
Dr. Barry Shaffer
Larry and Elveda Womack

Mr. and Mrs. John W.
Woods III

Mr. David Proctor

Ms. Sandy Proctor

Mrs. Betty Qualls

Chaplain Jimm Smedley

Mr. Charles Queen

Chaplain Jimm Smedley

Mr. Gavin Reherman

Randy and Deloras Spradlin

Mr. Larry Rice

National Association of
Letter Carriers, Branch 745
Chaplain Jimm Smedley
Sorrell Family
Robert, Bertonya, Daniel,
Adam, Michael and Joshua

Mr. Charles Roach

Loretta Rogers
Rick Rogers

**Mr. Charles Wesley
(Shag) Roark**

Ms. Nancy Sammons

Mrs. Lois Darlene Roark

Ms. Nancy Sammons

Mr. Ronald Robinson

Ms. Carol Robinson

**Mrs. Georgia Ann
Russell**

Dean and Suzanne Gibson
Joe and Mitzi Grizzle

Mrs. Ruth V. Sallie

Ms. Mildred Sharon Morrison
Gordon and Brenda Womack

**Mrs. Ruby Fay
Alexander Sammons**

Ms. Elaine Conrad
Joe and Sharon Hunsucker
Dean and Ethel Murray
Ms. Carlie Pelfrey
W.R. and Jo Ann Roberts
Chaplain Jimm Smedley

The Family of Ruby Fay
Alexander Sammons

Mrs. Virgie Alice Sammons

Ms. Barbara Scott

Mrs. Sondra Kay Sanders

Leo, Linda and Matt Pfaffenberger

Mr. John Savage

Mr. James Day
Ms. Cynthia Dehart
Mr. John R. Greer
Donnie and Janet Ingles and Family
Robert and Shelly Lemaster
Mr. Stan Pinson
Mick Ratliff
Chaplain Jimm Smedley

Mr. Curtis Scott

Ms. Kitty Leggett

Mr. Joshua Scott

Chaplain Jimm Smedley

Mrs. Patricia "Pat" A. Sensenig

Larry and Eileen Piper

Mr. Ed Shaffer

Friends of Hospice

Mrs. Nancy Bailey Shelton

Ironton High Class of '49

Mrs. Janet Gail Adkins Shull

Wayne and Joy Adkins and Family
David and Debbie Bailey
Gary and Ethel Dixon
Dr. Tony W. and Mrs. Tina B. Dotson
First Baptist Church of Cannonsburg, Fannie Boyer Class
Jason and Kelli Ford and Boys
Jeff and Sherri Fultz
Randy and Kim Goedecker

Ms. Mary C. Hatfield
Janet Burton's Cousins
Eddie and Linda Lester
Manual Ting, The Idaho Ting's
The Hickson Family
Tim and Tammy Picklesimer
Ms. Teresa Klingensmith and Staff at Main Drug

Mr. Janet Shumway

Roger and Glorious Hensley
Sandy City Free Will Baptist Church
Ms. Lana M. Smith
Ron and Sue Zastawniak

Mr. James Simmons

Ms. Jeanne Frazier
Saundra
Squeekie

Mr. Dave Skaggs

Mrs. Toni Skaggs

Mrs. Verna Mae Sloan

Chick and Judi Henthorne
Ms. Vicki Sherman
Richard and Jo Ann Steinbeck

Mr. Leonard Sloas

Ms. Debbie Vicini

Mrs. Shirley Sloas

Ms. Debbie Vicini

Mrs. Mary Slone

Roseanna and Jennifer Clark
Chaplain Jimm Smedley

Mrs. Norma Smith

Mr. Bill Hillman

Mr. Ralph Smith

Charles, Rita, Jay, Billie, Kim and Mark
Mr. Stan Pinson
John and Sandy Porter
Mr. Steve Skiles
Sons of the American Legion
Dale and Carol Stidham
The Webb Family
Ms. Minnie Womack

Mr. Donald R. Sorrell

Mrs. Pauline Biggs and Family
Mrs. Linda Crider
Charles and Janet Cross
Ron, Judy and John Elliott
Mr. and Mrs. Jeffrey Elswick
Mr. John R. Greer
George and Robin Hayes
Chuck, Kendra, Zack, Lindsey and Mark Hutchinson
Meade Station Church of God
Mr. David Osborne
Mr. Stan Pinson
Rodney and Karen Robinette
Ronnie and Patricia Robinette
Charles and Joyce Sorrell
Ms. Andrea Sue Sparks
Jim and Patty Stanley
Bill and Garnet Stapleton
Mr. and Mrs. Joseph Stitt
Bob and Linda Tackett
Ms. Sonja Taylor
Buddy and Lana Voiers

Mr. Willard T. Spence

Ms. Jan Armstrong

Mr. Randolph Spradlin

Mr. David Carroll
Mrs. Virginia Carroll
Tom and Mary Johnson
Jerry and Shari Mayer
Greg and Sandi Moore
Mrs. Nancy K. Quade
Leo and Cheri Reherman

Mr. Jerry Stambaugh

Ms. Carolyn Harris
Chaplain Jimm Smedley

Mrs. Venetia Stamper

KY Power Distribution
Carl, Patti and Elizabeth Stamper
Brent and Eva Tackett

Mrs. Lillie Stapleton

Ms. Sharon Bryant

Mrs. Alice J. Stephens

Asplundh
Ralph and Sally Hall
Ms. Hazel E. Hart
Doug and Evelyn Newell

Mr. Carl Ray Stewart

Mrs. Doris Stewart

Mrs. Virginia Sweeney

Ms. Carol Gunderson
Mr. Kevin Gunderson

Mrs. Wilma Taylor

Larry and Gloria Taylor

Mr. Eldon Thompson

Mr. and Mrs. Jack H. Adams

Mrs. Melinda Todd

Emmitt and Mary Blevins
Susan Hunt
Chaplain Jimm Smedley
Randy and Deloras Spradlin
Mrs. LuAnn Vance

Mrs. Audrey Triplett

Denny and Jeanie Dorton
Robert and Joanne Duncan
Ms. Carolyn Horn
Inez Deposit Bank
McCoy Law Office
Ms. Karen Sellers
Dan and Lori Waugh
Tom and Libby Wiseman

Mrs. Margaret J. Vanderpool

Mrs. Fondalene Alfrey

Mr. Roger Vanderpool

Ted and Lorae Dillow

Mr. Louis Waitzman

Ms. Jean B. Adkins

Mrs. Lucille Waitzman

Ms. Jean B. Adkins

Mr. Jack H. Walker

Jim and Julia Payne
Mr. Patrick D. Rase

Mr. Howard C. Wallace

Ben, Helen and Mike Bailey

Tom, Melissa and Ashton
Bailey
Mr. and Mrs. Douglas Barker
Ms. Patty Davis
Mr. Rusty Hamilton
Mr. David Russell
Ms. Patricia Sloan
Ms. Elizabeth Snider
Ms. Judy Wallace
Mrs. Grace Whitt and Family

Mrs. Stella Wallace

Pam and Rachael Crowell
Ms. Mary Palmer
Bob and Tawnee Russell

Mr. Virgil C. Wallace

Ms. Alice S. Gaines
David and Jeanne Henry
Hoose
Ms. Dorothy E. Oberst
The Bill Clevenger Family

Mr. Ernie Walters

Bill and Garnet Stapleton

Mrs. Loretta Weddington

Ken and Joyce Weddington

Mr. John Weidenheller

Darryl, Jane and Heather
Akers
Chuck and Melba Runyon
Mr. Jacob Shytle

**Mr. Thomas Edwin
Wellman**

Darryl, Jane and Heather
Akers
Ken and Pauline Flaming
Mr. and Mrs. Jeff Nichols
Pairs & Spares Sunday School
Class
Paul and Judy True

Mrs. Neva White

Ms. Patty Davis
Mr. Stan Pinson

Mr. Richard White

Charles Adams Insurance
Agency
Friends at Advance School

Ms. Marsha Hermann
Ms. Judy Justice Ledford
Michael and Adrienne Meade
Mr. Michael Meade
Mr. Evan White
Mrs. Peggy White
Ms. Susan Wilson
Mrs. Ann Wiseman

Mr. Denzil Whitt

Ms. Patricia Sloan

Mrs. Ruth F. Whitt

Chaplain Jimm Smedley

Mr. David Wilburn

Mrs. Clara Wilburn Bates and
Family
Ralph and Sally Hall

Mrs. Peggy Wilburn

Mrs. Clara Wilburn Bates and
Family

Mrs. Cristy L. Williams

The Family of Chauncey
Montgomery

Mrs. Gretta R. Wilson

First Baptist Church of Ironton
Gregg and Sharon Hager

Mr. Donald G. Withrow

Hopewell Holiness Mission

Mrs. Dora A. Withrow

The Family of Dora Withrow

Mrs. Sharon Marie Wolfe

Mr. and Mrs. Ronald Arthur
Mr. and Mrs. Jeffrey Elswick
Mr. and Mrs. Richard Keelin
Mr. Stan Pinson
Ray and Susan Stanley
The Embry and Branham
Families

Mrs. Margaret L. Wright

Mr. Larry Wright

Honorariums

May 1, 2020 – October 31, 2020

Betsy Cole, Chaplain

The Family of Virginia
Thompson

Mrs. Evelyn Crawford

Chaplain Jimm Smedley

Mr. Allen G. Darnel

The Family of Allen G. Darnel

Mrs. Clella Holcomb

Mrs. Vickie Burkholder

Mr. Bill E. McBrayer

Ms. Kathy Hiltner
Ms. Margaret McHaney
Ms. Sharon McHaney
Mr. William Raymond

Mr. Alger Shumway

Ms. Lana M. Smith

Chaplain Jimm Smedley

Mr. Kenneth Brown
The Family of Carol Johnson
The Family of Donnie Bryant
The Family of Dorothy
Morrison
The Family of Robert L. "Jake"
Jacobs
The Family of Robert R.
Murphy
The Family of Stanley Monn
The Family of Steve Davidson

Donations

May 1, 2020 – October 31, 2020

Mr. and Mrs. Claude Adkins
AMR Management Services
Anonymous
Edward and Mary R. Broomall
Ms. Linda Dyer
Kathy and Jay Elam
Frontstream Comprehensive
Distribution
Carl Ray and Darlene
Hennecke
Hennecke Drilling
Mrs. Mary Ellen Hieneman
Donald and Jeff Jenkins
Marathon Petroleum Co./Your
Cause, LLC Trustee
Marathon Petroleum/
Blackbaud Giving Fund
Marine Corps League
Greenbo Detachment
#1345
Mrs. Toni McGuire
Kateri "Terri" McKee
Ms. Hallie Miller
Bobby and Kim Stephens
Mr. Strecken
The Family of Dora Withrow
United Way of Southwestern
Pennsylvania
John and Deborah Vincent
Vistra Corporation (Hanging
Rock Power Plant)
Jackie Walker

Our Strength

It's a difficult time. Our lives have changed almost overnight. Things we took for granted like a simple trip to the grocery store, sharing time with trusted friends or simply going to work have become a challenge. But while we may be six-feet apart, we'll get through this together, as one extended family. That's our strength. That's our community and we're proud to be a part of it. Community Trust Bank, building communities, built on trust.

606.329.6000
www.ctbi.com



Member
FDIC



A 110-Year Tradition *Of Service*



(740) 532-2144
PHILLIPSFUNERALHOME.NET

VOTED #1 FUNERAL
HOME IN THE
TRI-STATE AREA

FUNERALS · CREMATION · PREPLANNING

Connect to King's Daughters day or night.

CARE



- Questions about upcoming appointments or information on making new appointments
- Check times and locations of services
- Request a prescription refill
- Nursing advice about a current medical concern



 **CARE24/7**
(606) 408-8999

**KING'S
DAUGHTERS**
KingsDaughtersHealth.com